

## Anti-DLL4 hIgG1 Antibody(MLCK-2(ABL-001))

### 产品信息

GM-51820AB-10	10 µg
GM-51820AB-100	100 µg
GM-51820AB-1000	1 mg

### 抗体信息

Species Reactivity	Human
Clone	MLCK-2(ABL-001)
Source/Isotype	Monoclonal human IgG1, κ
Application	Flow cytometry
Specificity	Detects DLL4.
Gene	DLL4
Other Names	AOS6, delta4, hdelta2
Gene ID	54567(human)
Background	The DLL4 gene provides instructions for making a protein that is part of a signaling pathway known as the Notch pathway, which is important for normal development of many tissues throughout the body. The DLL4 protein attaches to a receptor protein called Notch1, fitting together like a key into its lock. When a connection is made between DLL4 and Notch1, a series of signaling reactions is launched (the Notch pathway), affecting cell functions. In particular, signaling stimulated by DLL4 plays a role in development of blood vessels before birth and growth of new blood vessels (angiogenesis) throughout life.
Storage	Store at 2-8°C short term (1-2 weeks).Store at ≤ -20°C long term.Avoid repeated freeze-thaw.
Formulation	Phosphate-buffered solution, pH 7.2.
Endotoxin	< 1 EU/mg, determined by LAL gel clotting assay

## Data Examples

### Flow cytometry

The recommended usage range is 0.5-4 µg per test. H\_DLL4 HEK-293 Cell Line (Catalog # GM-C26476) was stained with Anti-DLL4 hlgG1 Antibody (Catalog # GM-51820AB) or isotype control antibody, followed by anti-Human IgG APC-conjugated Secondary Antibody.

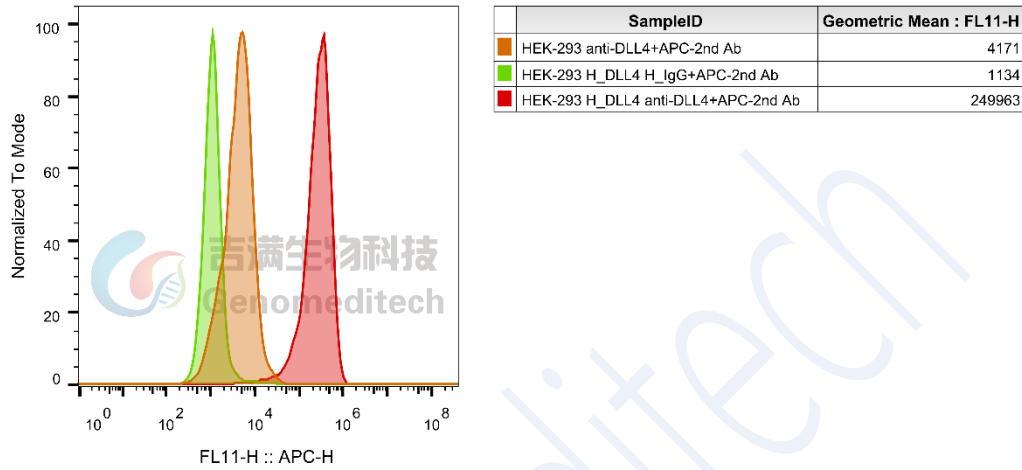


Fig 1. 流式验证结果